

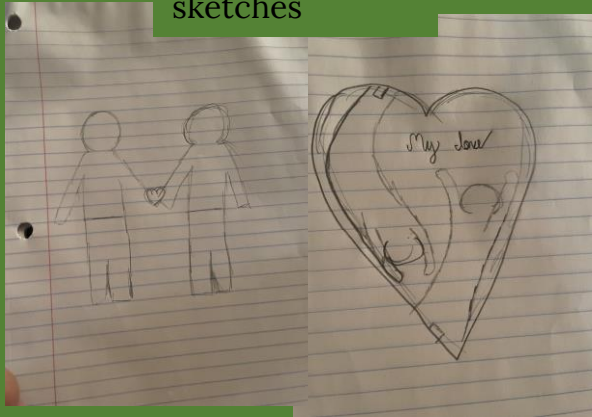
Process Portfolio

By: Citlali Gallegos
IB Visual Arts (Photos) SL

Keith Haring Inspired Work 1A

Discovering the work of Keith Haring, I was inspired to create an artwork with the theme of love. In my first trial sketch I wanted to convey beaming love. For example, when a couple holds hands, I wanted to illustrate the radiant love beam out. However, I felt it was too simplistic because I did not include enough detail for the audience to receive the message I tried to send out. In my second trial I did see an improvement in my illustration, however, it did not show the strong connection I wanted to come across to my audience. This work is personal as my love language is physical touch. As third time is the charm, my third sketch was my final result; the feeling I wanted the audience to feel did come across, and it does show physical touch and the power it has which is what I wanted to show the audience

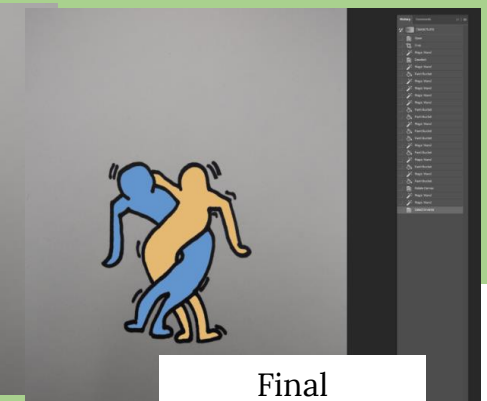
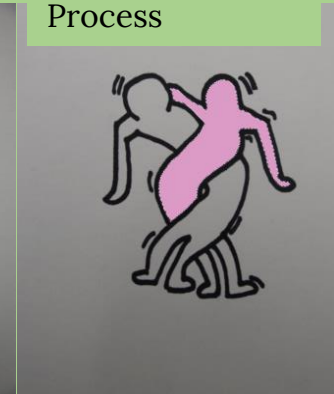
My trial sketches



My final sketch



My Color Process



Final



To begin the media process, I traced my sketch with a black marker onto a white blank piece of paper. The reason was so I would use Photoshop to add color and any other features I chose to add. Something difficult I encountered was what colors my figures should be. I debated whether to use pink and blue to clearly illustrate genders or to create a tribute to my life and use my favorite color and my partners. I concluded to use my favorite color, peach and my close friends, blue. I still experimented with different colors (which is shown in the second image of "My process"). Once I figured out what colors I wanted my figures I focused on filling the empty voids by using an outline of a red heart. The reason for the color red was to signify burning love. It still felt empty around the edge, therefore I decided to add more color with a vibrant gradient background. I wanted the gradient to be red to represent love however, it would blend into the outline of my red heart. This will belittle the importance of the heart because the not contrast. For this reason, I choose something on the opposite of the color spectrum and went with a cool shade gradient. I also wanted to have a small detail that not all relationships in life is a perfect fairytale. In a relationship there will be an argument and each argument strengthens a relationship. They serve a positive outcome and to illustrate this I used black dots surrounding my figures.

Keith Haring Inspired Work IB

As researching images created by Keith Haring a pattern, I encountered was his work can be very simplistic however, has a straightforward message. Haring's work that was inspired in this process was "Love and Radiant Baby"(1982) and "Best buddies"(1987). They both involve physical touch which is important. Physical touch is something that describes to me how much a person cares. I also wanted to add lines because in Haring's work, he was known for it, it was his signature. I was inspired by using the pop art. Due to my visit to the Broad museum I was exposed to different pop art, and I tried to incorporate it into this piece. In the artwork, "I ... I'm Sorry," by Roy Lichtenstein (1965-1966) and "Tulips" by Jeff Koons (1995-2004). They both include vibrant bold colors which is what makes it so appeal to the audience. I wanted to use this technique to make sure the audience will be caught by the bright color I used.



In "Best buddies" the focal point is the two figures that are monochromatic. The reason could be when you find your compatible other, they share similar interest. There is something about that person that attracts you which can be sharing a similar hobbies or interest. However, because they are their own person, they are not identical. Therefore, one is darker, and the other figure is lighter. In this image it is visible they are friends because of body language. They have one arm wrapped around the other unlike in "Love and Radiant Baby" (1982) it is the two figures focus on each other.



The connection between the artwork of Keith Haring and my own is the theme of love. They both include physical touch and the focal point using different size lines surrounding the image. The color scheme connects with "Best buddies", one of the figures both have a peach color, however, differ on the second figure. The reason the colors contain a firm difference is because I wanted to illustrate the idea opposites attract and for Haring work those who are more compatible have similar interest. However, the result share the love. As a whole, I feel the whole piece is chaotic however, I feel this just illustrates to my audience a relationship is not picture perfect but has its own downfalls. It inspires me to create different piece all showing the different characteristics of love languages. Examples would be quality time, words of affection, or acts of receiving



Haring's artwork, "Love and Radiant Baby" (1982) has the focal point of the two images which is clearly illustrated with the lines surrounding the figure in different length. There is no color and the purpose of it shows how deep the love is and having it one color shows they have the same strong feelings for each other. The body language demonstrates the figures could possibly be a couple by the hand placement and the way the figures are facing each other.

Body, Form, and Shape 1A

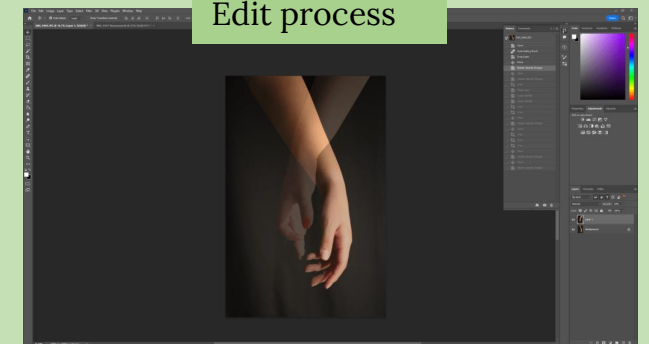
An assignment my teacher introduced to the class was to portray the shape and form of the body. While searching for inspiration on Pinterest I found various images a couple holding hands in a blank background while one arm is fading away as if they have passed away for the relationship is coming to an end. In the process of the photoshoot, I was unsure how to position the arms. My thinking is to create two separate images of the arms and in photoshop mask them together. However, trying to achieve this I was worried the positioning of the arms would not look as one cohesive piece but rather two separate images forced into one. I took various images of the arms in different angles to prevent coming to this problem and having a variety of options to choose from. However, being so worried about this problem I did not think of the angle where the arms are coming from. For example, in the first image the arm comes in an angle, leaning towards the side and in the second image the arm is coming directly down. I placed the two different images of separate layers so it would be easier to decrease the opacity of the one arm. While editing the images in photoshop trying to fix the arm, I notice a red nail was missing the female's hand. Therefore, I placed the finger to touch the other hand to hide her nail from missing. (Image on "Edit process"). After fixing prior little mistakes it was time to create the fading effect. The opacity had to be lowered on the specific layer of the female's arm. I had to place the opacity percentage perfectly because if it was too bright it would defeat the purpose of trying to show my audience the female if leaving. And if the opacity was too low it would be too difficult to notice the hand. While experimenting with the percentage I noticed 22% was the perfect placement. After this I exported my image to Lightroom to create the black and white effect. I had changed the present to B&W and played with the light exposure until it was to my liking. The end product was smashing success to be; it shows the arm fading and the missing nail of the female was not visible. I felt proud of what I had accomplished and my audience did get the theme of heartbreak.

Original images

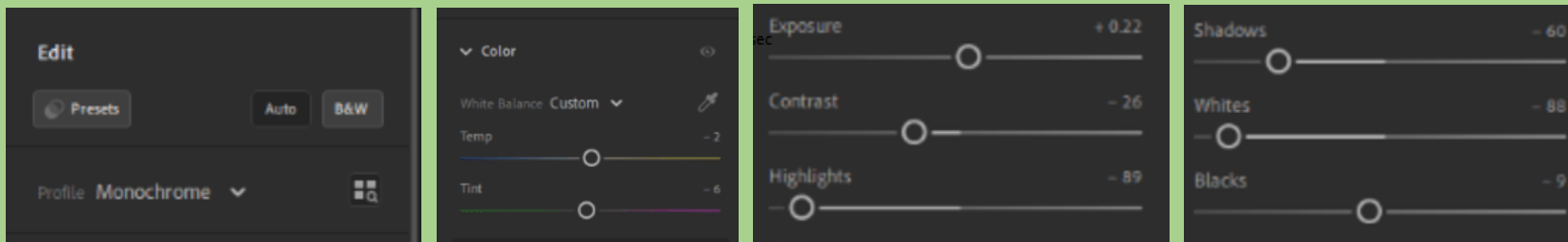
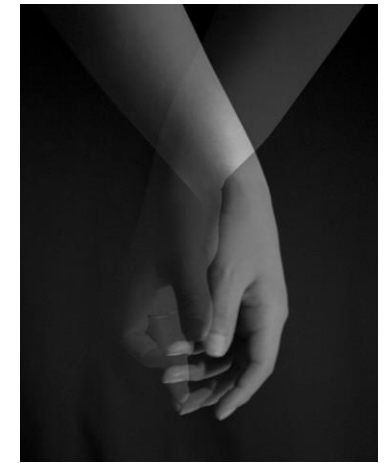


ISO 200
f/166
1/125
sec

Edit process



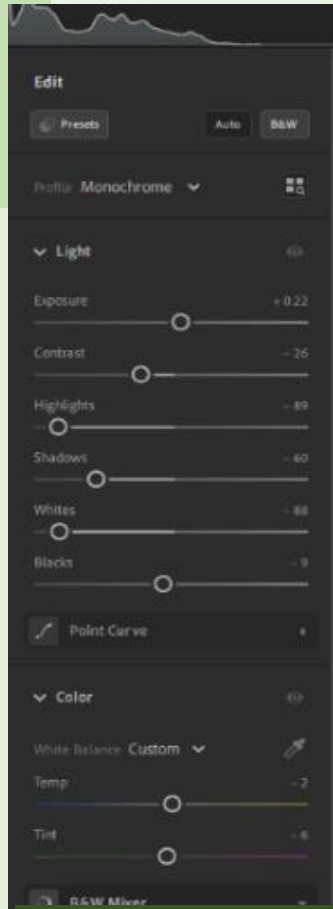
Final



Lightroom
Edit

Body, Shape, and Form IB

I was so in love with Black and White images I choose to create a series instead of one image. Therefore, I had another photoshoot however, for the following images I wanted to emphasize the female features. An example on Pinterest I had seen was the color bone, sharp face structure or a person's hand. In the photoshoot I used a blank background, so all the focus is towards my subject. When attempting to capture my subject's features I felt it was a fail because it did not give the drastic look, I wanted to give the audience. I felt the images did not really emphasize the subject's sharp features. In the first image of "Completed Works" I did not capture my subject's jawline or collarbone. The position I had my subject covered what I needed which was a mistake I learned from. From this I knew for the following images to photograph from an angle to capture the jawline or her side profile. When trying to photograph the hand spirals I was confused what was the best way to place two hands together to create something that will capture the viewers attention. I prioritized where the crevices are most visible in that position and how close the photograph should be taken. I felt the position I chose was very appealing and I also saw improvement on how to position subjects. After the photoshoot I exporting the best images, I had to Lightroom to make my images black and white. I knew when edit the spiral hands I would do so in a manner that will emphasize the crevices on the subject's hand. Because I was very new to editing, I chose to use Lightroom's preset for my images that were recommended withing the B&W presents. After choosing a preset I liked would tweak with the setting to fix something that I did not like. With the settings shown on the right was the settings I used for the rest of my images. The reason for that was to create a similar pattern between my works and show coherence. I felt this series was successful because they all show form and shape. My images showed the female's delicate feature which was my mission in these pieces. I was proud of my images and along the way I learned the importance of positioning a subject and editing. I saw improvement along these areas and inspired to create similar works. I was mainly intrigued in trying to recreate more images with hand spirals and what new positions would be possibly eye-catching.



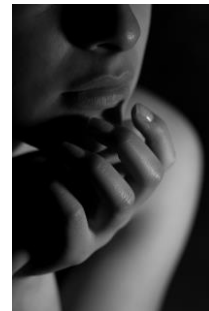
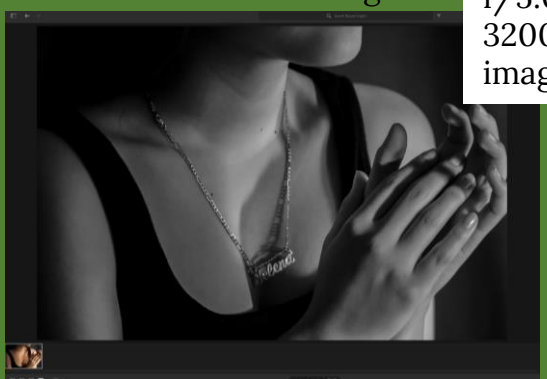
Before

After editing

1/40sec;
f/5.0; ISO
3200 all
images

Completed Works

Inspiration

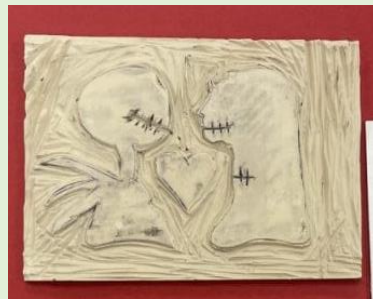


Block Printing

Beginning
Block



Process



Final



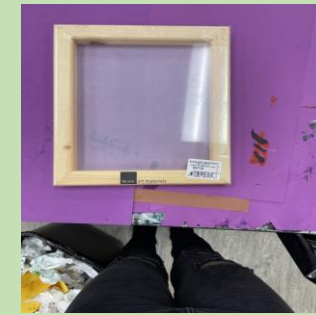
Being introduced to block printing I knew immediately what my theme would be. I wanted to do a drawing revolving around love therefore, I choose the Jack Skellington and his partner Sally. "The Nightmare Before Christmas" was the first movie I watched with my partner there this was a personal piece to me. A problem I experienced was to not choose a too difficult image to recreate because block printing is new to me, so I was not at the level at expertise to create a hard image. The original picture I wanted to carve was too difficult, so I chose something simpler. I only began drawing my picture on my block canvas with a pen and then to carve the image out. To begin carving was very difficult for me because I would second guess my decisions, however, towards the end of class I became more confident in using tools. When I began to carve out the mouths it was difficult to carve the straight vertical lines because if I were to mess up, it would be Permanent. I chose to do a trial stamp on a blank piece of paper and see what I need areas needed to be carved deeper and what needed to improve on. My first trial was on the orange paper (Third image on "Process") and my mistake was I did not coat my figures with enough black paint to capture each detail. Another mistake was I did not carve deep enough around the mouth because they look like one glob of paint. For my second trial it was on the green paper (Fourth image on "Process) and I did a better job applying paint, however, it was not distributed evenly. There were areas that were left blank due to not enough paint being in the area. Knowing my mistakes when I tried to fix my figure's smile on the left, but when doing that I carved an uneven smile. I was worried the gap would be too large compared to the female's mouth. However, moving on, when I carved the right figure's smile the outcome looked better, the lines were more visible which can be seen on the last image of "process. My trial run of this stamp is seen in the last image of "Process" and my worry was correct. The gap between the mouth of the male's mouth was larger compared to the female's mouth. I also chose to color the heart in the middle with red paint instead of black to show the dynamic love between the couple. It would also create a more drastic contrast against the black.

Before my final piece I painted my wood white however I felt too basic and simple. IN the first image of "Painting wood" I felt the piece as a whole would be too simplistic, so I repainted my canvas trying to add texture and movement. With wet painting I created swirls using an upward and downwards motion using the paintbrush in a continuous motion. I felt the motion would be significant to the image because it would represent their love mixing and combining together



Photo Screen-print

Exploring the works of Andy Warhol, I was amused by his famous screen-prints. Therefore, I was inspired me to create my own screen-print. To begin the process the materials needed which was uno photo emulsion, vinyl, fabric paint, and a scraper to spread the solution around of the vinyl. The process begins with emulsion on the scraper and then slowly distributing the solution in a thin layer on top of a vinyl canvas. It was important to place a thin solution or bubbles will come out on my canvas affecting the final product. The reason is this would prepare my vinal to burn my image through which is the blue solution. I choose a family image that was drawn of my family and I at a fair to create many matching shirts for my family. One of the problems that would occur is if my solution distribution was too thick on any part of the vinal it will not dry at the same rate as the rest of the vinal and will be more difficult to burn my image through. Another problem I encountered was the thin hair details, because they are so thin it is possible it will barely illustrate on the vinal when it is burned through. To fix the problem I went to photoshop and with the pencil tool I traced over the braids of the girl on the bottom right. In the design process I noticed the lines to my desire thickness, therefore I proceeded to print the image on a clear paper. This paper is what will be placed on top of my vinal with the solution on top for my screen-printing. (Shown in "My Work" on the last image) . When printing I noticed no mistakes. The process begins with the vinal canvas that needs a thin layer of uno photo emulsion, if it was not thin enough bubbles will form that will not leave a clean finish. Once dried over 24 hrs. I place my image over the vinyl image and leave it in direct sunlight for 18 minutes to burn the image on my canvas. I noticed someone bumped into my canvas while it was burning but I didn't think much of it. However, in the final product the letters shifted which left leaving the letters unreadable. I would need to place duct tape on the letters on the vinyl, so the paint does not make the messed letters appear on my shirt. I prepped my shirt by placing a carboard in-between the shirt to not let the letters smear on the other side. I placed the vinyl canvas on the shirt, and I was worried for the shirt placement. I had someone hold my canvas while I drag the paint across. After 3 swipes across my shirt, I lifted the vinal and blow-dried the paint to leave it cured. I was impresses with the final product.



My materials



My Work

Shirt making process



Final



Photo Image Transfer IA

In my class we were introduced to photo image transfer which I found so amusing. The whole process was straightforward and simple as a two-year-old can do it! I was only provided with one canvas, so I tried a trial run beforehand just to be prepared. The theme I had in mind was the lanterns present in "Tangled". While looking on Pinterest I had run across @Evenstar942 for the artwork she had created seen on "inspiration". I was worried my results would not look pretty because I am unexperienced using paints. What boosted my confidence was that I am a very artistic person when it comes to drawing on paper and pen so I felt it could not be too different. Trying to recreate this art on my wood piece made me feel very successful. On the first image of "Process" my recreation was very similar to my inspiration. After letting the paint dry for 24 hours, I then printed out a picture of my partner and I to represent the love Rapunzel and Flynn Rider had together. One worry I had was if the printed image was too dark for my wood canvas it would be difficult to see. Therefore, on photoshop I increased the brightness and lowered the contrast so I would not run into this problem. After printing the paper, I placed modge podge on the canvas where my paper would be placed to transfer onto the wood. Before it would dry, I placed my image face down and pressed the image very hard to the canvas to get rid of any air bubbles. If I did not the part of the printed image not touching the wood canvas would not transfer leaving blank dots. After another 24 hours of drying, I slowly rubbed away the paper with a damp sponge to get rid of the top layer. However, when I noticed bits on the image coming off completely, I would pause to let my image dry and recover and later begin again. After repeating this process about 5 or more times after all the white bits of well paper came off completely, leaving only the image behind, is when I can stop repeating the process. As a whole I was unimpressed with my trial run. I rubbed parts of the images off leaving behind only white spots. For the future I was told to rub in circles to minimize accidentally rubbing off the image. I was also unaware the modge podge would dry white, I had assumed it would dry clear. I was upset because it ruined my background however, I knew I could fix it by repainting on top. For my final piece on canvas, I knew mistakes to prevent. Which included to use clear dry modge podge, rub in circular motions to remove the top layer of the image, and to make sure to not use too dark of an image. The reason is to make sure the audience can see a contrast. Reflecting on the whole process I was impressed with my painted background however disappointed in myself for not being too gentle and patient to make sure I do not take large pieces of the image off.

Inspiration



Process



Final



Photo Image Transfer IA

Original image



After learning what needed to be improved based on my trial run of wood canvas, I felt prepared to do image transfer on my final canvas. After discussing with my teacher about the differences from the canvases, I was told it was easier to rub off the top paper layer of the paper on the canvas which created a sense of relief for me because I felt it was my biggest struggle during my trial run. My inspiration for this project was from Dane Shue "Marilyn Monroe" (2021). This image immediately caught my attention because the subject is black and white however the background uses bright colors. This is what I wanted to try and incorporate in this piece however, with my own twist. To begin this process, I chose an image from my cousin's ½ birthday (Seen on "Original Image") and transferred it to photoshop. Once in photoshop, I used the threshold setting to create the black and white effect on the image. I used the eraser tool to clean around the edge and give a sharp look. In the art piece Dane Shue created, he used the word "love" and I was initially going to use, this however, it felt non-original and simplistic to me. Therefore, I chose Rock Star which I was inspired by the bass my cousin was holding. After printing the image, I began on painting my canvas. Because I used colorful letters, I felt a colorful background would complement the colorful letters. I was initially going to create a spiral but when thinking of a rock star I immediately thought of splashes of colors and messy. To create this message to my audience I placed vibrant color paint onto a tissue and dapped it across my image. This would create the splash and messiness I wanted to portray a rockstar. I continued this entire process until majority of my canvas was colored. After letting the paint dry for 24 hours, I used the same modge podge from yesterday because I wanted it to dry white. By having a white layer, the subject and the letter would be more impactful instead of messing with the background. This time rubbing off the top layer of the paper was easier on this type of canvas compared to the last trial. I felt the canvas had absorbed the image, making it harder to scrape off which was a positive thing. After repeating the rubbing process until all white paper was removed, I finally completed my artwork. I was very proud and impressed with my final product. I felt the trial run was a smart move because I had feedback to improve my work.

Inspiration



Process



Final



Work Cited

- “Avertissement de Redirection.” *Google.com*, 2023,
www.google.com/url?sa=i&url=https%3A%2F%2Fwww.pinterest.com%2Fpin%2F8585055511992149%2F&psig=AOvVaw2B4qtNul1ufaAW9fz45b_C&ust=1682478319871000&source=images&cd=vfe&ved=0CA8QjhqxqFwoTCPj5oamGxP4CFQAAAAAdAAAAABAD. Accessed 25 Apr. 2023.
- “Best Buddies, 1990 - Keith Haring - WikiArt.org.” *Www.wikiart.org*, www.wikiart.org/en/keith-haring/best-buddies-1990.
- “Good Painting Ideas! In 2023 | Small Canvas Art, Art Inspiration Painting, Canvas Art Painting.” *Pinterest*, pin.it/6AHT4At. Accessed 25 Apr. 2023.
- “I...I’m Sorry! - Roy Lichtenstein | the Broad.” *Www.thebroad.org*, www.thebroad.org/art/roy-lichtenstein/iim-sorry.
- “Keith Haring | Untitled (Love & Radiant Baby) (1982) | Artsy.” *Www.artsy.net*, www.artsy.net/artwork/keith-haring-untitled-love-and-radiant-baby.
- “Marilyn Monroe (2021) Acrylic Painting by Dane Shue | Street Art Love, Pop Art Painting, Pop Art Decor.” *Pinterest*, www.pinterest.com/pin/marilyn-monroe-2021-acrylic-painting-by-dane-shue--233202086946442739/. Accessed 25 Apr. 2023.
- “Pin by Dedeh Pony on PONY. | Dark Photography, Double Exposure, Hand Photography.” *Pinterest*, www.pinterest.com/pin/495396027755748583/. Accessed 25 Apr. 2023.
- “Tulips | Guggenheim Museum Bilbao.” *Guggenheim Bilbao*, www.guggenheim-bilbao.eus/en/the-collection/works/tulips.